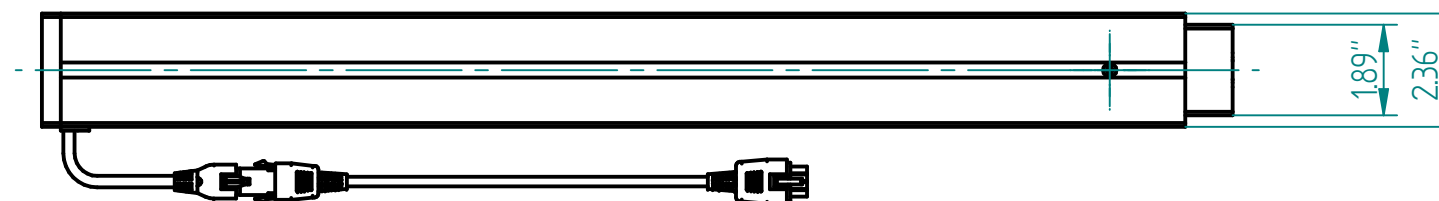
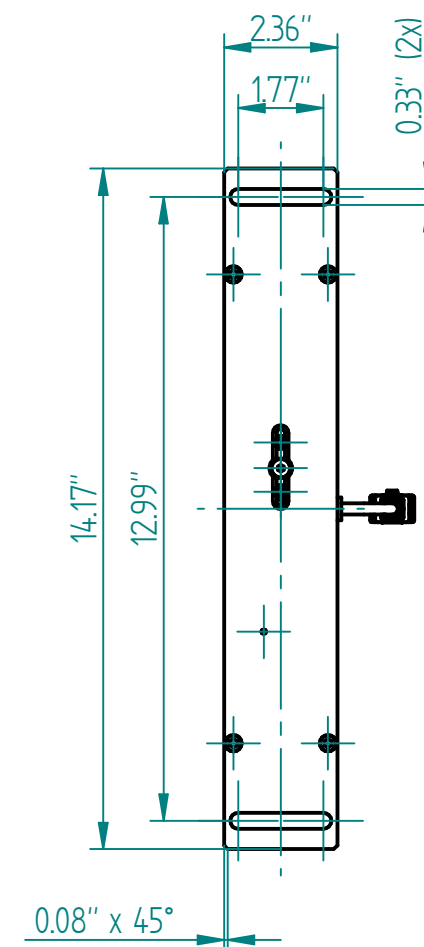
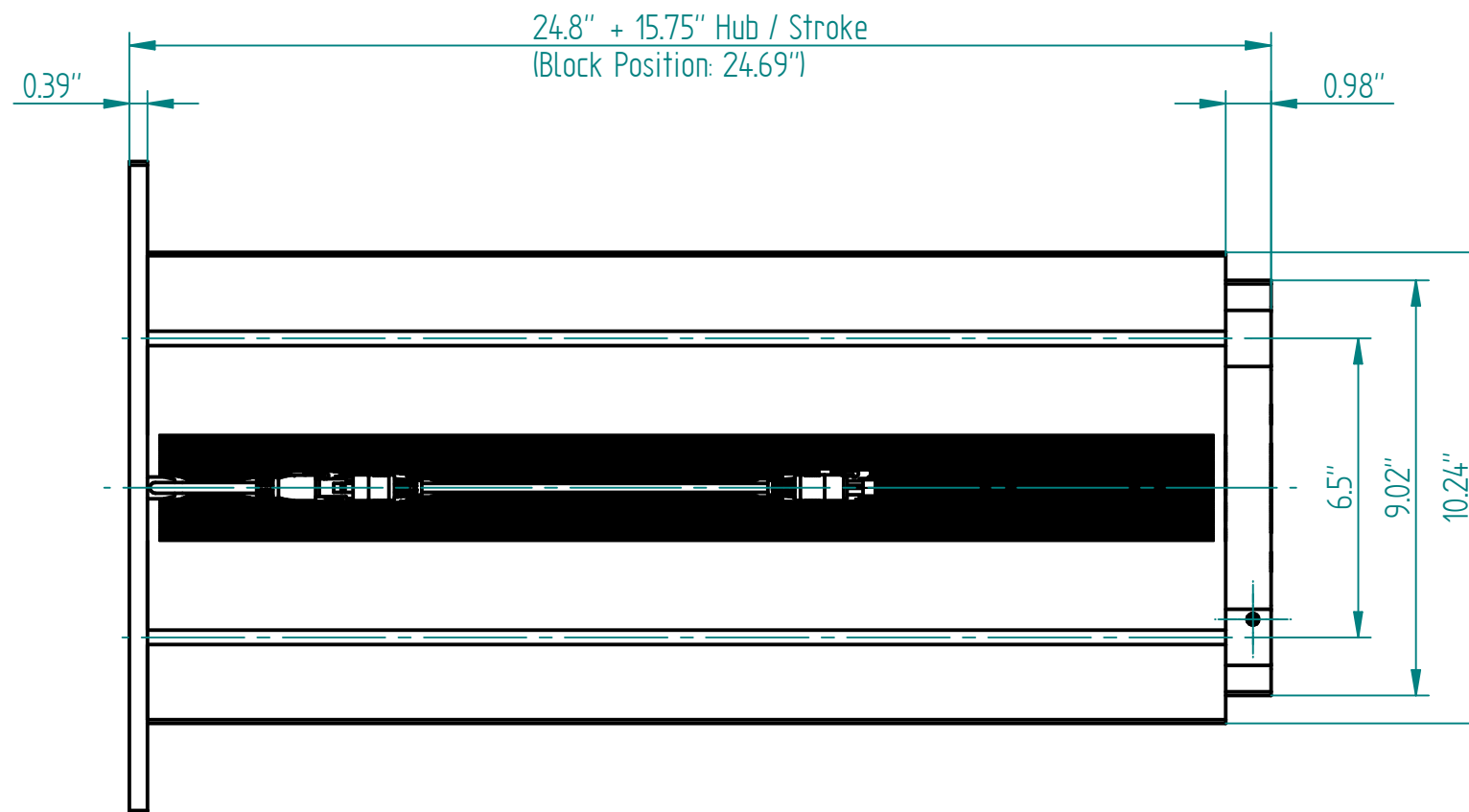
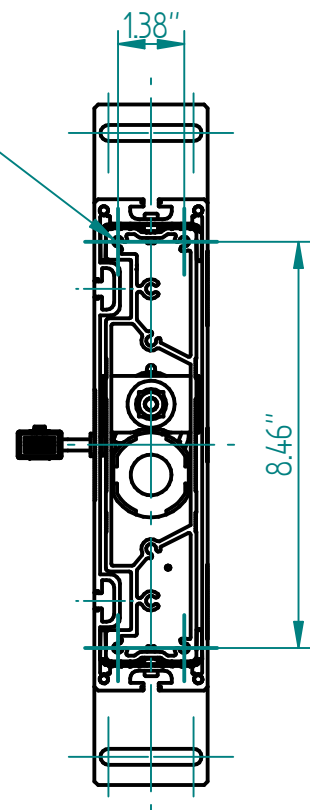
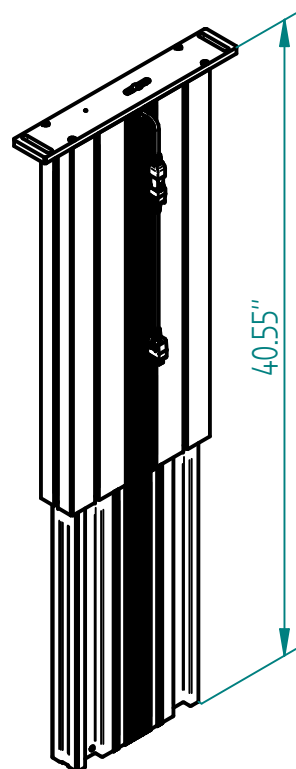


4x Ø 5.3 (inkl. 4x Schraube M6x20 gewindefurchend)
4x Ø 5.3 (incl. 4x Screw M6x20 self-tappingd)

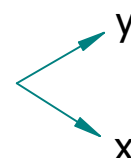
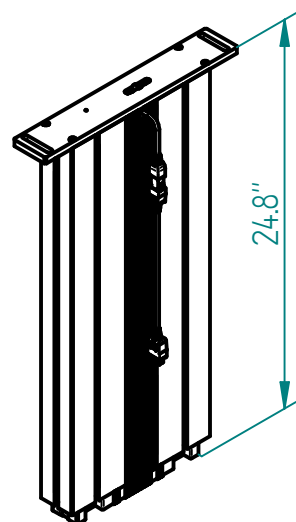


Motorkabel 71", Steckergrösse 0.91"x0.63"
Motor cable 71", Plug size 0.91"x0.63"

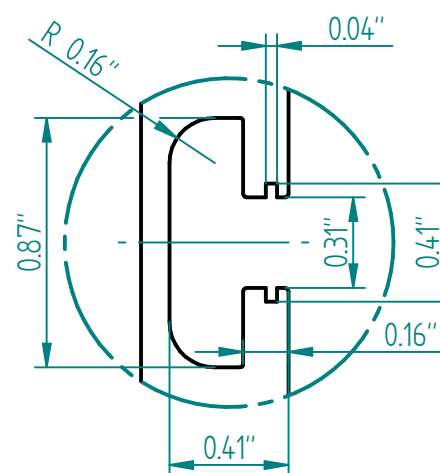
ausgefahren
extended



eingefahren
retracted



Nutengeometrie
T-Slot geometry



Technische Daten / technical specifications

max. Druckbelastung / max. pressure load	674 lbf
max. Systembelastung / max. system load	abhängig von Steuerung / depending on control box
max. statische Zugbelastung / max. static tensile load	112 lbf
max. dynamische Zugbelastung / max dynamic tensile load	11 lbf
max. Hub / max. stroke	15.75"
Hubgeschwindigkeit / lifting speed	abhängig von Steuerung / depending on control box
max. stat. Biegemoment / max. static bending moment	Mbx stat. 885 lbf·ft / Mby stat. 332 lbf·ft
max. dyn. Biegemoment / max. dynamic bending moment	Mbx dyn. 406 lbf·ft / Mby dyn. 148 lbf·ft
Aluminiumprofile / aluminium profiles	farblos eloxiert / colorless anodized
Führungsart / type of guidance	Gleitführung (Kunststoff) / slide (plastics)

Index	Datum / Date	Name	Änderungsmitteilung / notification of change
GEZEICHNET / DRAWN	16.12.2019	tiho	GEWICHT / WEIGHT 11.107 kg
GEPRÜFT / CHECKED	16.12.2019	anhe	MAßSTAB / SCALE 1:4
ERGO SWISS table lift systems		ZEICHNUNGSNUMMER / DRAWING NUMBER a-901.01104-US	ARTIKELNUMMER / ASSEMBLY NUMBER 901.01104
		INDEX 00	FORMAT A3