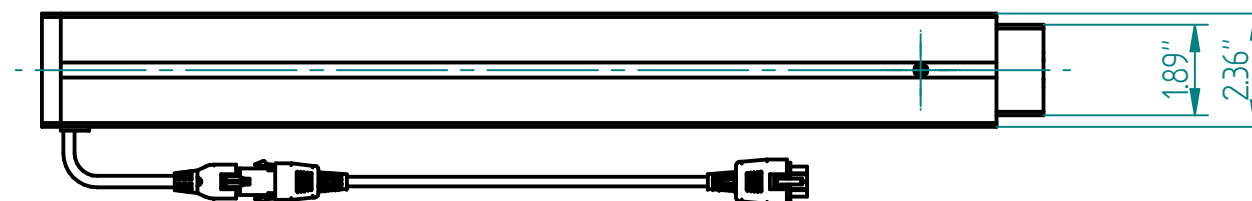
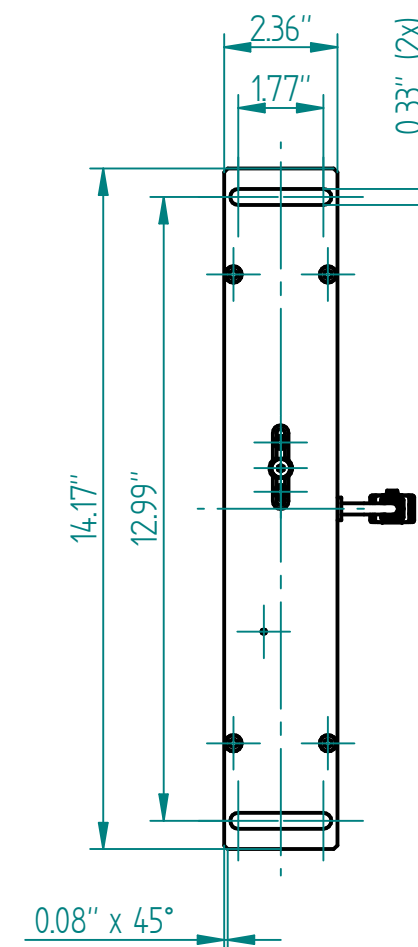
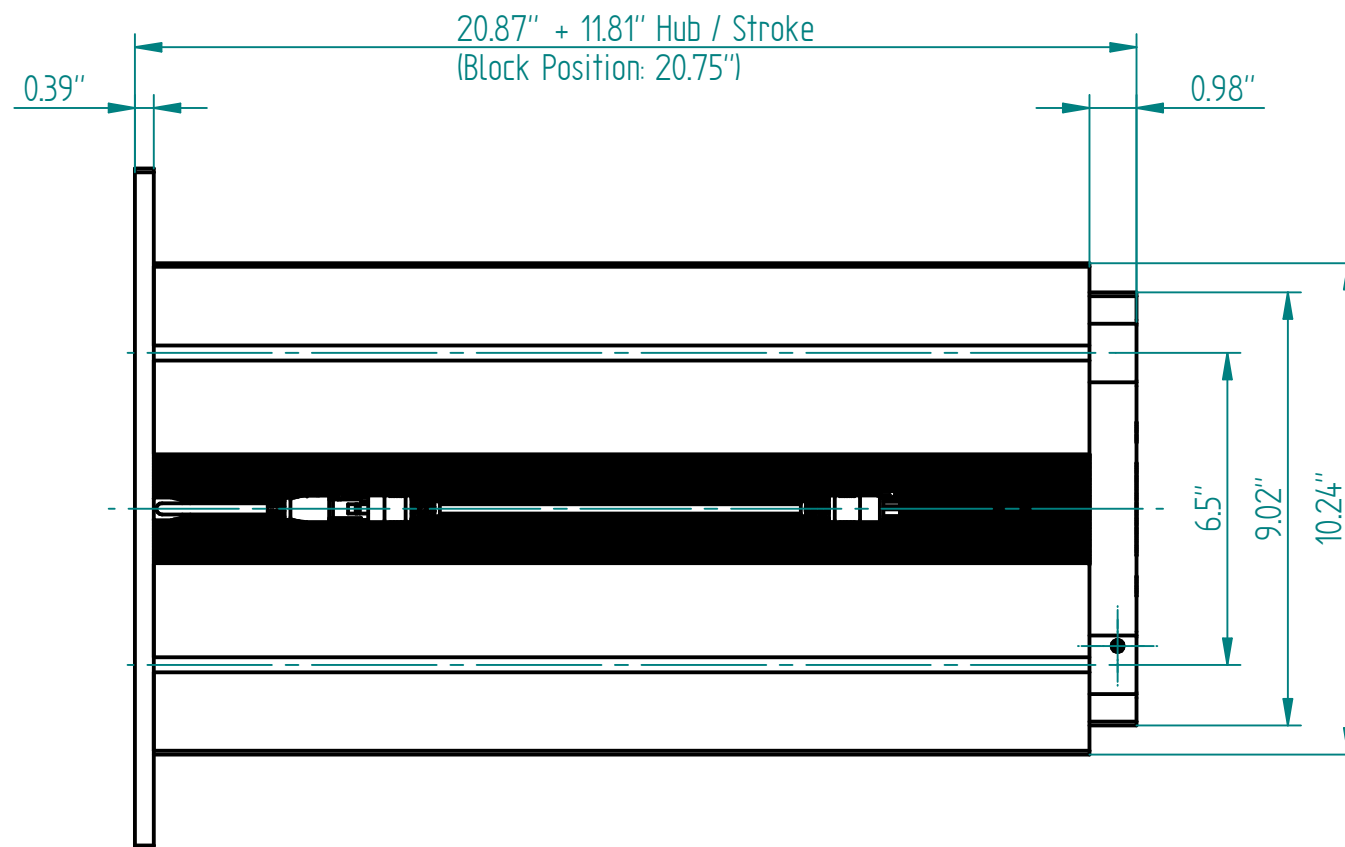
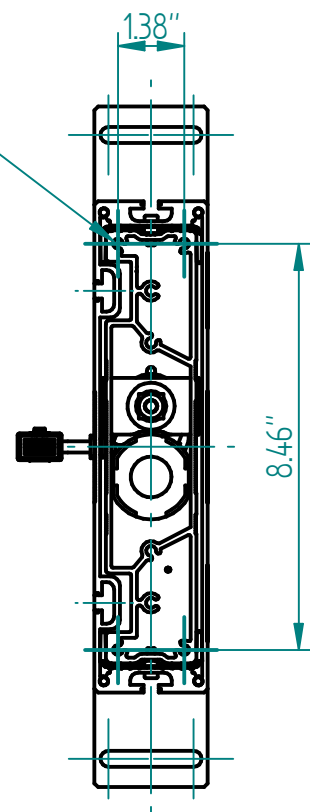
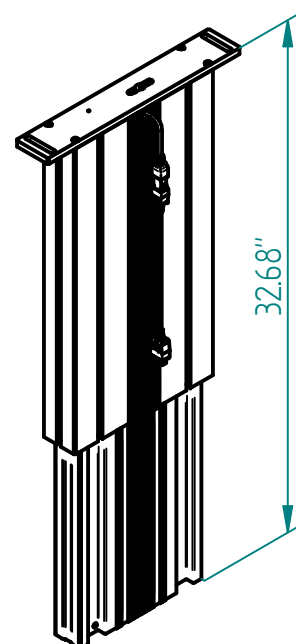


4x Ø 5.3 (inkl. 4x Schraube M6x20 gewindefurchend)
4x Ø 5.3 (incl. 4x Screw M6x20 self-tappingd)

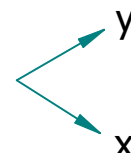
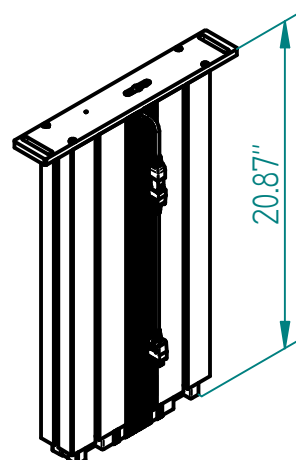


Motorkabel 71", Steckergrösse 0.91"x0.63"
Motor cable 71", Plug size 0.91"x0.63"

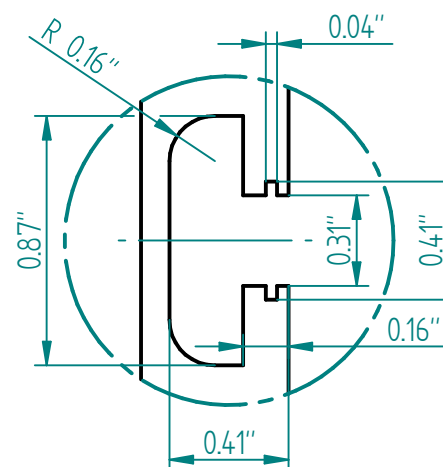
ausgefahren
extended



eingefahren
retracted



Nutengeometrie
T-Slot geometry



Technische Daten / technical specifications

max. Druckbelastung / max. pressure load	674 lbf
max. Systembelastung / max. system load	abhängig von Steuerung / depending on control box
max. statische Zugbelastung / max. static tensile load	112 lbf
max. dynamische Zugbelastung / max dynamic tensile load	11 lbf
max. Hub / max. stroke	11.81"
Hubgeschwindigkeit / lifting speed	abhängig von Steuerung / depending on control box
max. stat. Biegemoment / max. static bending moment	Mbx stat. 885 lbf · ft / Mby stat. 332 lbf · ft
max. dyn. Biegemoment / max. dynamic bending moment	Mbx dyn. 406 lbf · ft / Mby dyn. 148 lbf · ft
Aluminiumprofile / aluminium profiles	farblos eloxiert / colorless anodized
Führungsart / type of guidance	Gleitführung (Kunststoff) / slide (plastics)

Index	Datum / Date	Name	Änderungsmitteilung / notification of change
GEZEICHNET / DRAWN	16.12.2019	tiho	GEWICHT / WEIGHT 9.719 kg
GEPRÜFT / CHECKED	16.12.2019	anhe	BEZEICHNUNG / ASSEMBLY NAME
a-901.01103-US			Hubsäule SL 1330
a-901.01103-US			Lifting column SL 1330
a-901.01103-US			ARTIKELNUMMER / ASSEMBLY NUMBER
a-901.01103-US			901.01103
a-901.01103-US			INDEX 00
a-901.01103-US			FORMAT A3