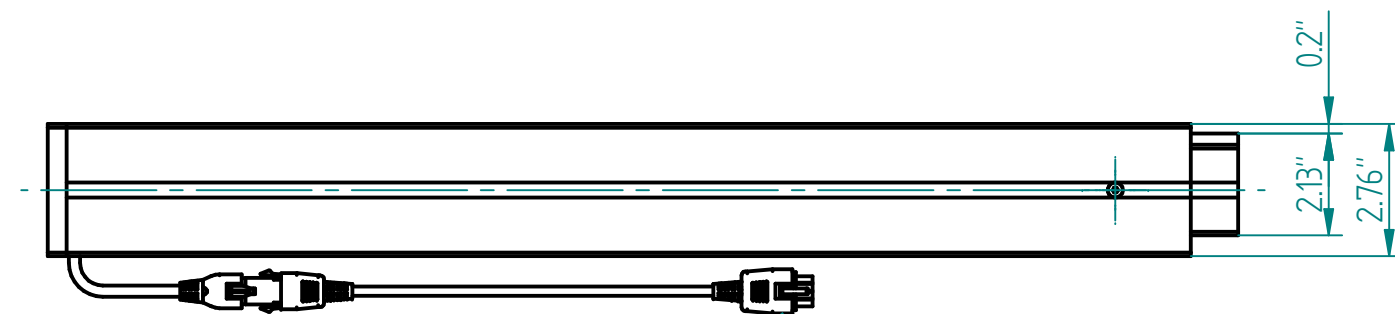
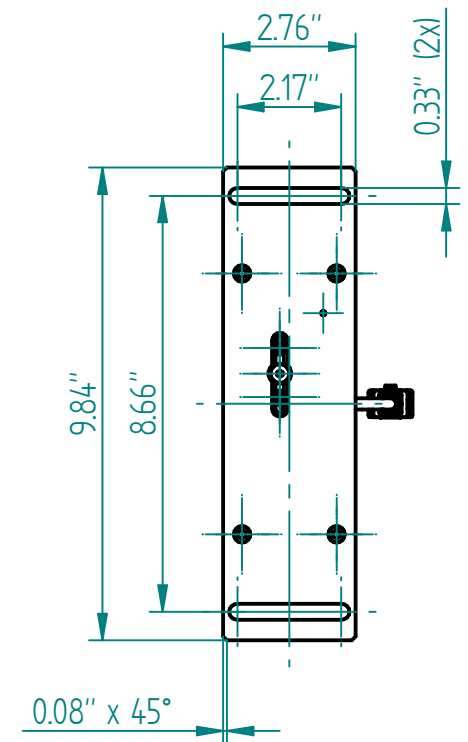
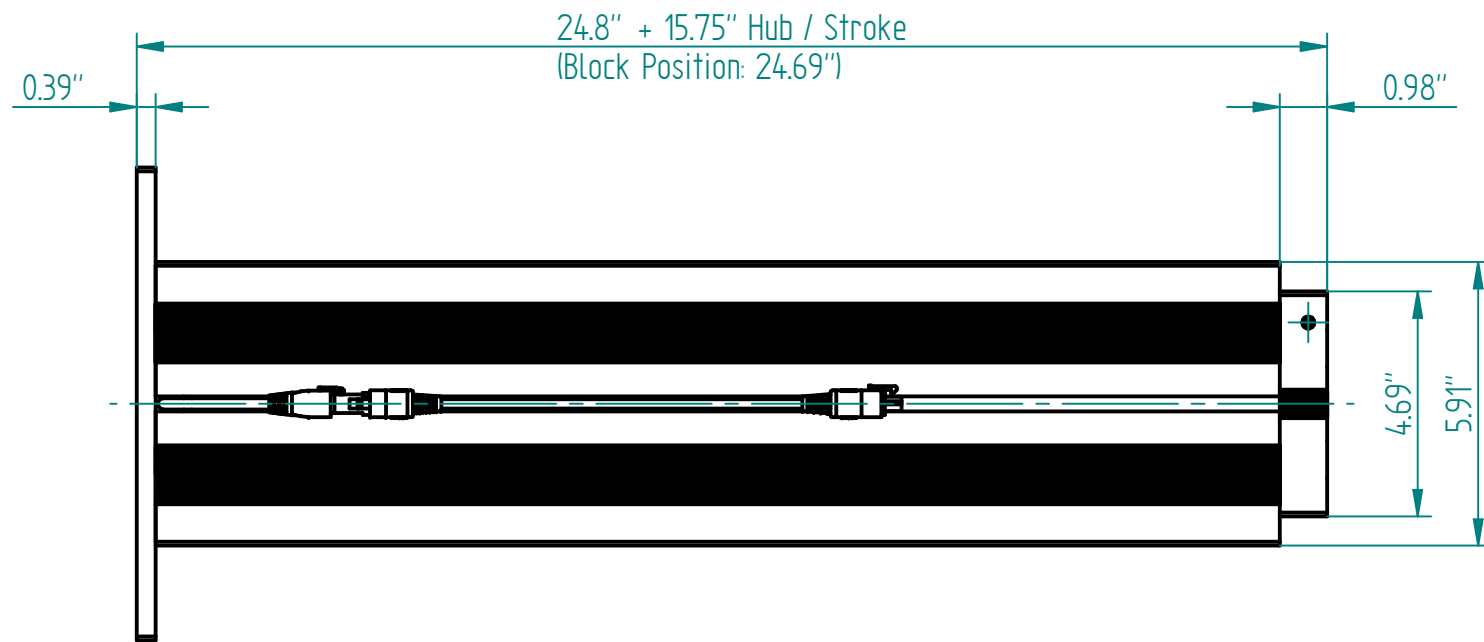
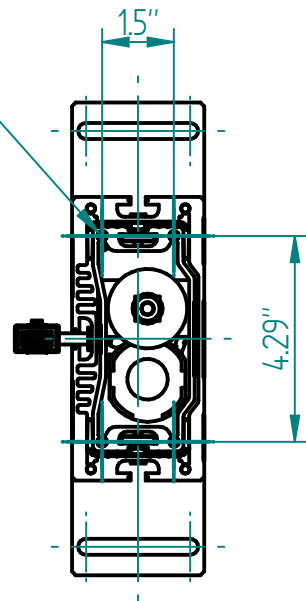
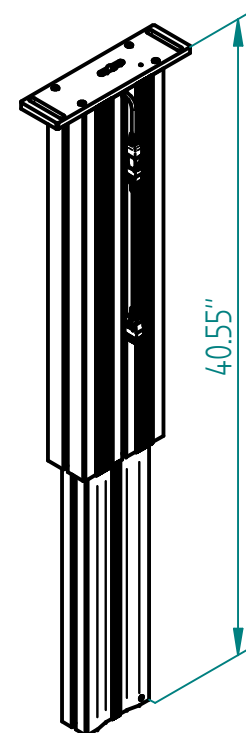


4x Ø 5.3 (inkl. Schraube M6x20 gewindefurchend)
4x Ø 5.3 (incl. Screw M6x20 self-tappingd)

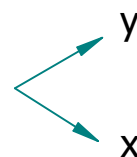
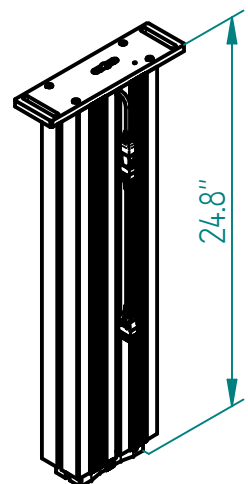


Motorkabel 71", Steckergrösse 0.91"x0.63"
Motor cable 71", Plug size 0.91"x0.63"

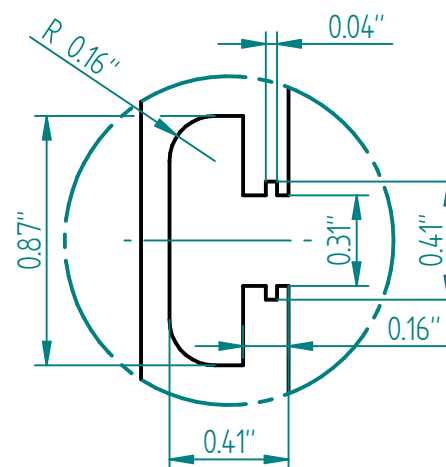
ausgefahren
extended



eingefahren
retracted



Nutengeometrie
T-Slot geometry



Technische Daten / technical specifications	
max. Druckbelastung / max. pressure load	674 lbf
max. Systembelastung / max. system load	abhängig von Steuerung / depending on control box
max. statische Zugbelastung / max. static tensile load	112 lbf
max. dynamische Zugbelastung / max dynamic tensile load	11 lbf
max. Hub / max. stroke	15.75"
Hubgeschwindigkeit / lifting speed	abhängig von Steuerung / depending on control box
max. stat. Biegemoment / max. static bending moment	Mbx stat. 664 lbf · ft / Mby stat. 258 lbf · ft
max. dyn. Biegemoment / max. dynamic bending moment	Mbx dyn. 331 lbf · ft / Mby dyn. 111 lbf · ft
Aluminiumprofile / aluminium profiles	farblos eloxiert / colorless anodized
Führungsart / type of guidance	Gleitführung (Kunststoff) / slide (plastics)

Index	Datum / Date	Name	Änderungsmittelung / notification of change
GEZEICHNET / DRAWN	22.01.2020	tiho	GEWICHT / WEIGHT 9.389 kg
GEPRÜFT / CHECKED	22.01.2020	anhe	MAßSTAB / SCALE 1:4
a-902.01024-US		Hubsäule SM 1340	
a-902.01024-US		902.01024	
00		A3	