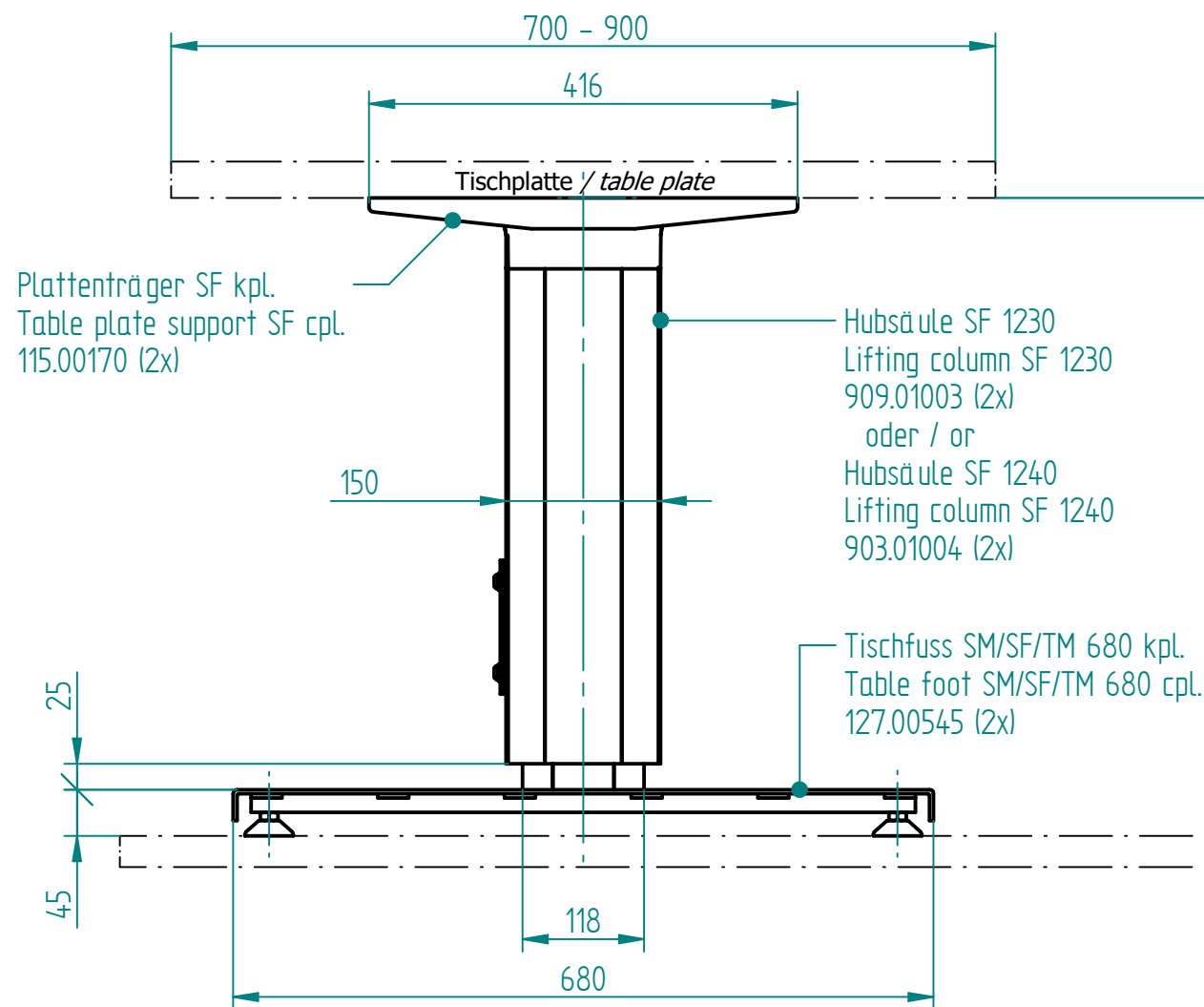
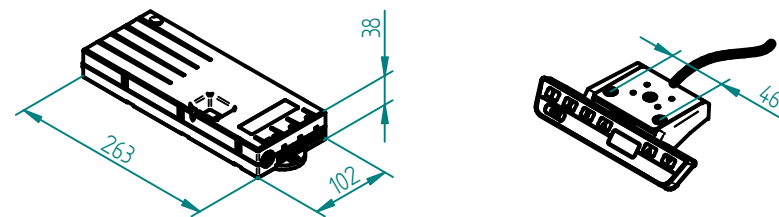
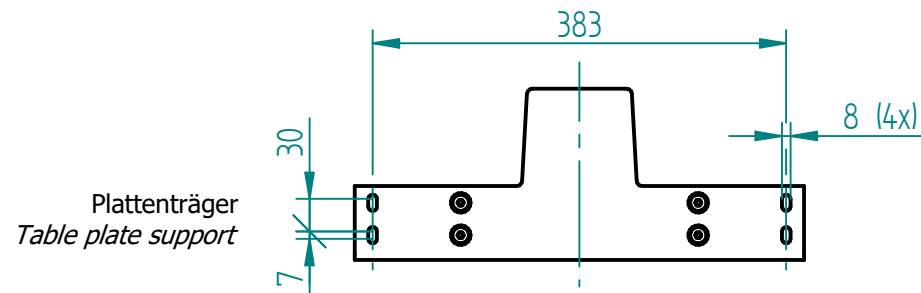
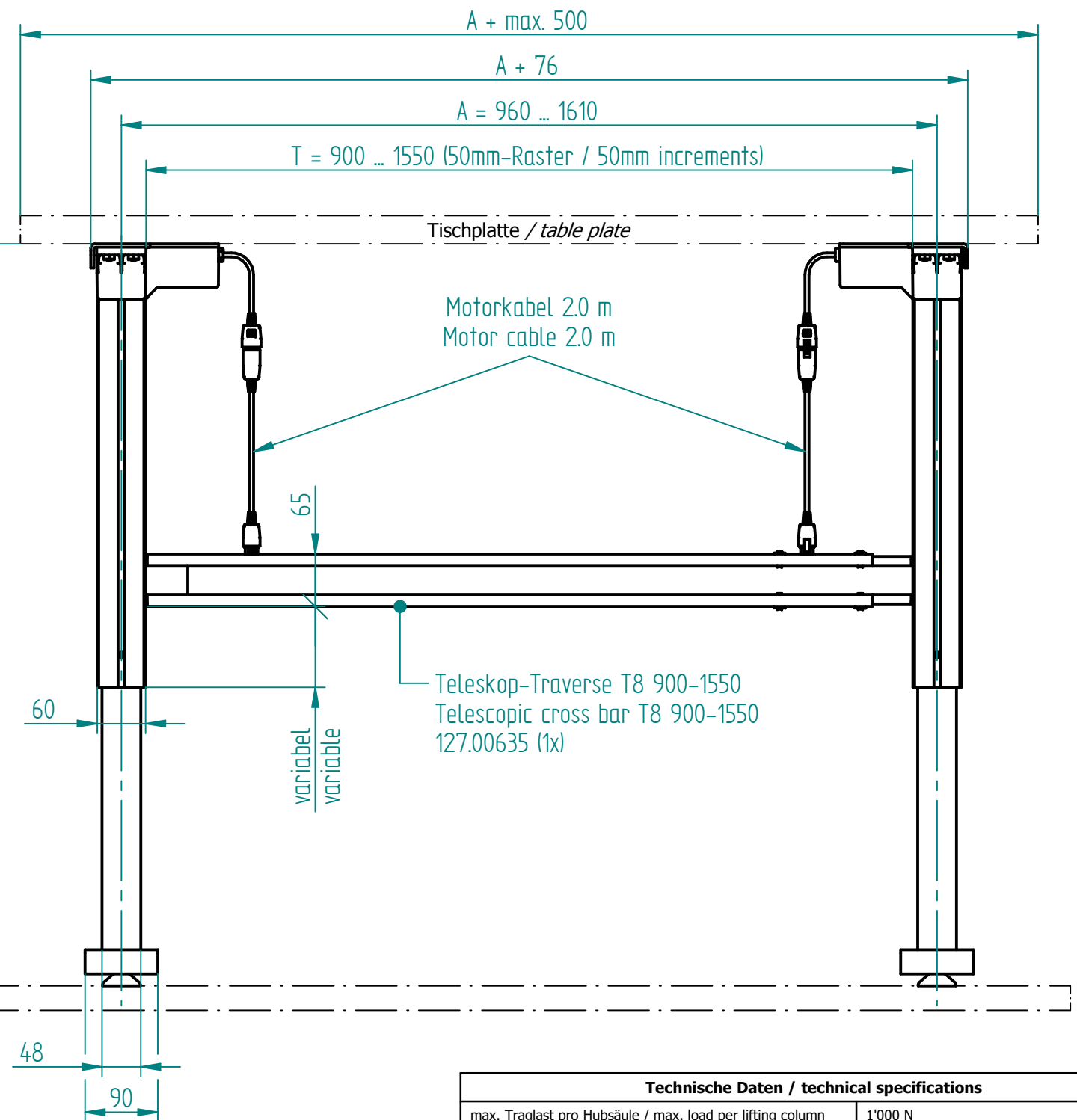


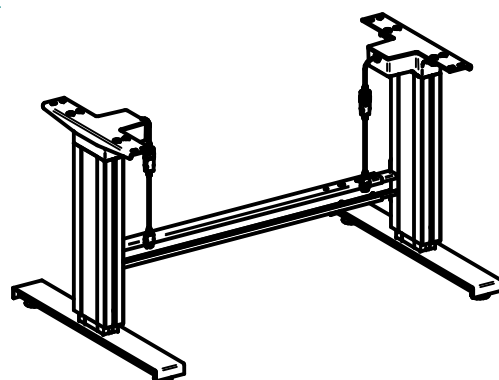
- beigelegt / enclosed:
- **Steuerung Compact** / Control box Compact
 - **XX = länderspez. Netzkabel** / XX = Country specific power cable
 - **02 = Handtaster Compact Typ Memory** / 02 = Hand switch Compact Type Memory
 - **Befestigungsschrauben für Tischplatte** / Mounting screws for table plate



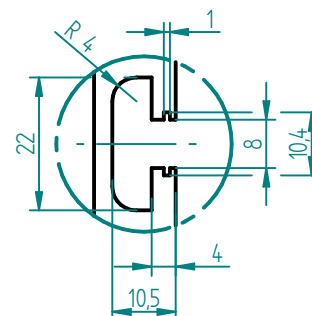
Hub / Stroke
H
(Block Position: H-3)



1:20



Nutengeometrie
T-Slot geometry



Technische Daten / technical specifications	
max. Traglast pro Hubsäule / max. load per lifting column	1'000 N
max. Systembelastung / max. system load	2'000 N
max. statische Zugbelastung / max. static tensile load	500 N
max. dynamische Zugbelastung / max dynamic tensile load	50 N
max. Hub / max. stroke	300 mm / 400 mm
Hubgeschwindigkeit / lifting speed	20 mm/s
Aluminiumprofile / aluminium profiles	farblos eloxiert / colorless anodized
Führungsart / type of guidance	Gleitführung (Kunststoff) / slide (plastics)

Name	Hub / Stroke	H	XX = EU	XX = CH	XX = US
SF 2230 960-1610 XX 02	300	620	909.71003	909.71103	909.71203
SF 2240 960-1610 XX 02	400	720	909.71004	909.71104	909.71204

Index	Datum / Date	Name	Änderungsmitteilung / notification of change
GEZEICHNET / DRAWN	01.03.2023	yake	sep. Stückliste mit gleicher Nr. / sep. list of parts with same no.
GEPRÜFT / CHECKED	01.03.2023	tiho	MAßSTAB / SCALE 1:7
ERGO SWISS table lift systems		ZEICHNUNGSNUMMER / DRAWING NUMBER	ARTIKELNUMMER / ASSEMBLY NUMBER
		u-909.001	909.71XXX
		INDEX	FORMAT
		00	A3